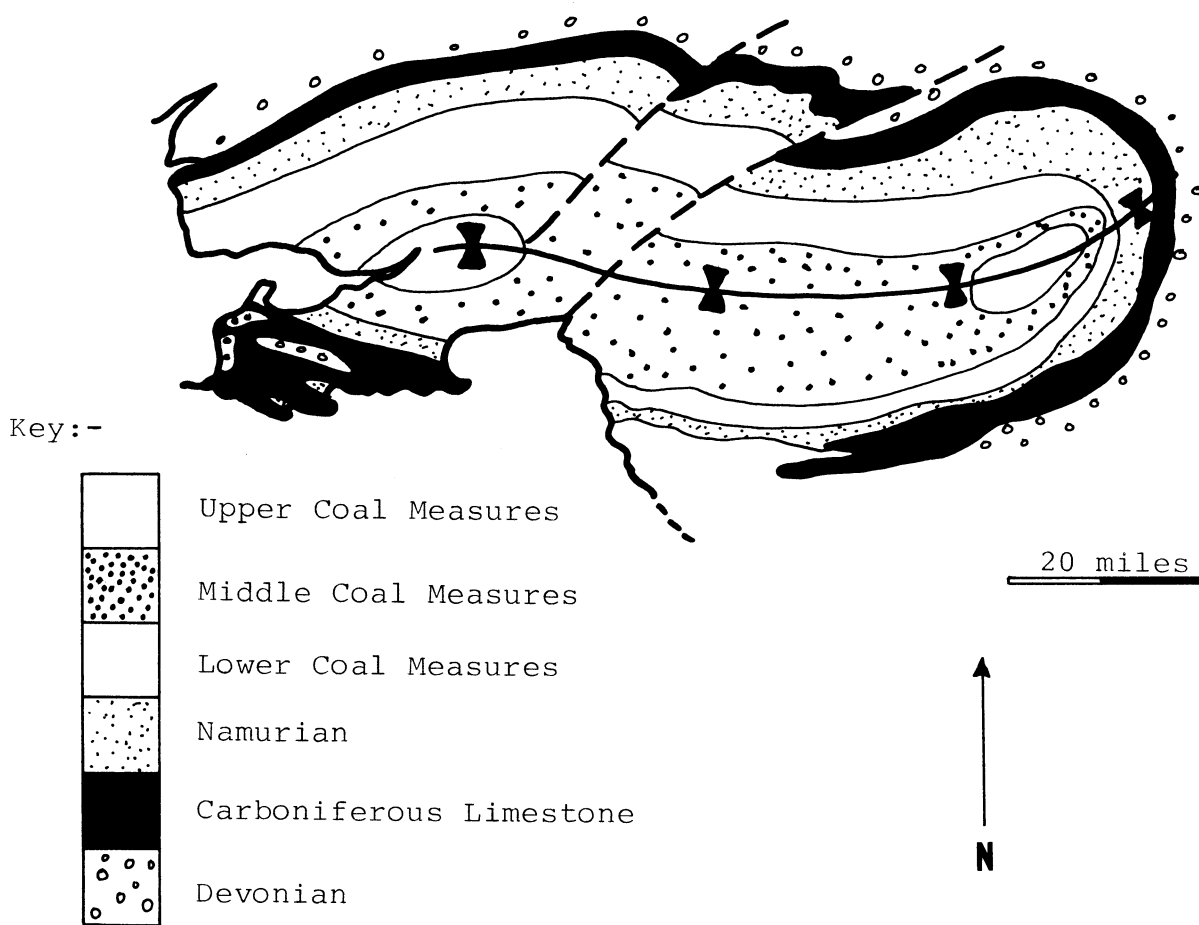
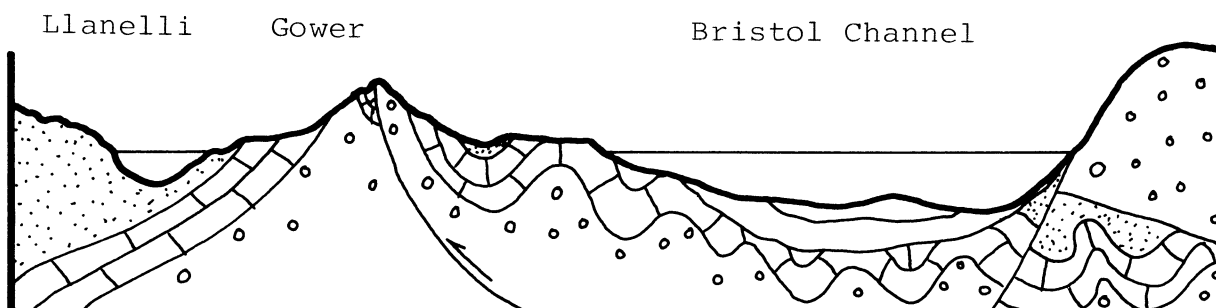


## Simplified structure of the South Wales Coalfield



## Section through Gower & the Bristol Channel



The structure of the coalfield clearly shows that, during the Hercynian Orogeny, the compressive force which folded the rocks came from the south, producing east-west folds. The intensity of folding increases southwards, forming tight folds in the floor of the Bristol Channel, and in Gower. Note the contrast in style of geology between the coalfield and Gower/Bristol Channel.

Fig.7